

# RACCORDERIA FILETTATA

## RACCORDERIA FILETTATA IN AISI 316 SECONDO ISO 4144

### AISI 316 THREADED PIPE FITTINGS ACCORDING TO ISO 4144 STANDARDS

#### CARATTERISTICHE TECNICHE

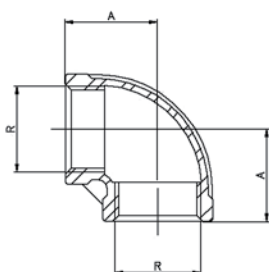
- // **Materiale:** Aisi 316
- // **Filettature:** secondo ISO 10226-1
- // **Temperatura di funzionamento:** -20°C - +180°C
- // **Pressione massima:** 20 bar fino a 40°C

#### TECHNICAL FEATURES

- // **Material:** Aisi 316
- // **Threaded:** according to ISO 10226-1
- // **Working temperature:** -20°C - +180°C
- // **Max. working pressure:** 20 bar up to 40°C

## GOMITO 90° FF

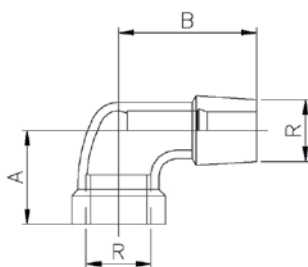
### 90° FF ELBOW



Misura R Size R	Codice articolo Code	Dimensioni in mm Dimensions in mm	
		A	
1/4"	902000	19	
3/8"	902001	23	
1/2"	902002	27	
3/4"	902003	32	
1"	902004	38	
1" 1/4	902005	45	
1" 1/2	902006	48	
2"	902007	57	
2" 1/2	902008	69	
3"	902009	78	
4"	902010	96	

## GOMITO 90° MF

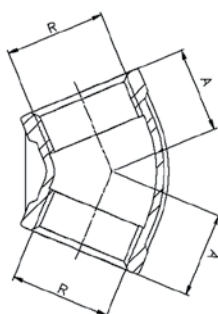
### 90° MF ELBOW



Misura R Size R	Codice articolo Code	Dimensioni in mm Dimensions in mm	
		A	B
1/4"	902020	19	27
3/8"	902021	23	29
1/2"	902022	27	35
3/4"	902023	32	40
1"	902024	38	46
1" 1/4	902025	45	54
1" 1/2	902026	48	57
2"	902027	57	70
2" 1/2	902028	69	83
3"	902029	78	94
4"	902030	96	115

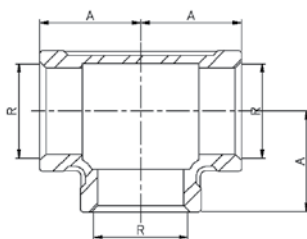
## GOMITO 45° FF

### 45° FF ELBOW



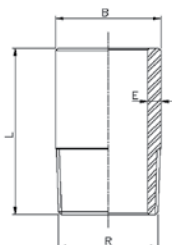
Misura R Size R	Codice articolo Code	Dimensioni in mm Dimensions in mm	
		A	
1/4"	901099	17	
3/8"	901100	19	
1/2"	901101	21	
3/4"	901102	25	
1"	901103	29	
1" 1/4	901104	33	
1" 1/2	901105	37	
2"	901106	42	
2" 1/2	901107	49	

## TEE FEMMINA EQUAL TEE



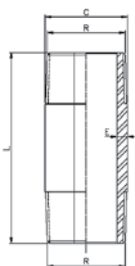
Misura R Size R	Codice articolo Code	Dimensioni in mm
		Dimensions in mm
		<b>A</b>
1/4"	902040	19
3/8"	902041	23
1/2"	902042	27
3/4"	902043	32
1"	902044	38
1" 1/4	902045	45
1" 1/2	902046	48
2"	902047	57
2" 1/2	902048	69
3"	902049	78
4"	902050	96

## TRONCHETTO M WELDING NIPPLE



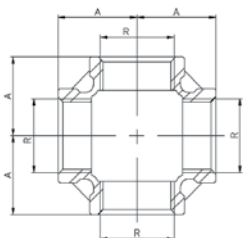
Misura R Size R	Codice articolo Code	Dimensioni in mm		
		Dimensions in mm	B	E (min.)
1/4"	903101	13,7	2	30
3/8"	903103	17,1	2	30
1/2"	903105	21,3	2,5	35
3/4"	903107	26,7	2,5	40
1"	903109	33,7	3	40
1" 1/4	903111	42,2	3	50
1" 1/2	903113	48,3	3	50
2"	903115	60,3	3	50
2" 1/2	903117	76,1	4	60
3"	903119	88,9	4	70
4"	903123	114,3	4	80

## BARILOTTO EXTENSION SCREW



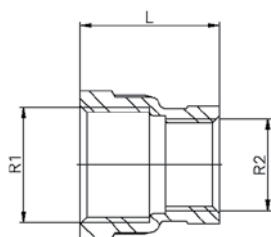
Misura R Size R	Codice articolo Code	Dimensioni in mm		
		Dimensions in mm	B	E (min.)
1/4"	902901	13,7	2	40
3/8"	902903	17,1	2	40
1/2"	902905	21,3	2,5	60
3/4"	902907	26,7	2,5	60
1"	902909/60	33,7	3	60
1" 1/4	902911	42,2	3	80
1" 1/2	902913	48,3	3	80
2"	902915	60,3	3	100
2" 1/2	902917	76,1	4	100
3"	902919	88,9	4	120
4"	902921	114,3	4	150

## CROCE FEMMINA FEMALE CROSS



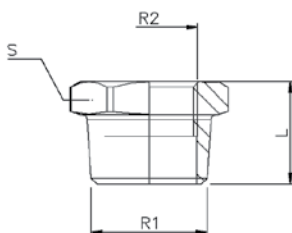
Misura R Size R	Codice articolo Code	A
		Dimensions in mm
1/4"	903130	19
3/8"	903131	23
1/2"	903132	27
3/4"	903133	32
1"	903134	38
1" 1/4	903135	45
1" 1/2	903136	48
2"	903137	57

## MANICOTTO RIDOTTO FF FF REDUCING SOCKET



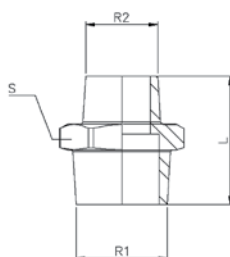
Mis. (R1xR2) Size (R1xR2)	Codice articolo Code	L
3/8"x1/4"	902300	26
1/2"x3/8"	902301	34
3/4"x1/2"	902302	36
1"x3/4"	902303	42
1" 1/4x1"	902304	48
1" 1/2x1" 1/4	902305	52
2"x1" 1/2	902306	58

## RIDUZIONE MF HEXAGONAL REDUCING SOCKET



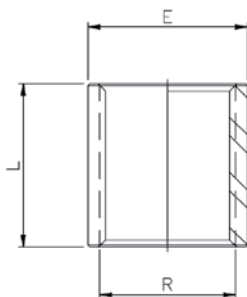
Mis. (R1xR2) Size (R1xR2)	Codice articolo Code	L	S
3/8"x1/4"	902080	16	18
1/2"x1/4"	902081	19,5	23
1/2"x3/8"	902082	19,5	23
3/4"x3/8"	902083	21	28
3/4"x1/2"	902084	21	28
1"x1/2"	902085	24	35
1"x3/4"	902086	24	35
1" 1/4x3/4"	902087	27	44
1" 1/4x1"	902088	27	44
1" 1/2x1"	902089	27	50
1" 1/2x1" 1/4	902090	27	50
2"x1" 1/4	902091	32	62
2"x1" 1/2	902092	32	62
2" 1/2x1" 1/2	902093	34	81
2" 1/2x2"	902094	34	81
3"x2"	902095	37,5	95
3"x2" 1/2	902096	37,5	95

## VITE DOPPIA RIDOTTA HEXAGONAL REDUCIN NIPPLE



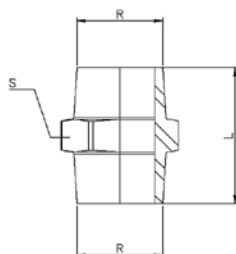
Mis. (R1xR2) Size (R1xR2)	Codice articolo Code	L	S
3/8"x1/4"	902150	26,5	18
1/2"x1/4"	902151	30	23
1/2"x3/8"	902152	30,5	23
3/4"x3/8"	902153	35	28
3/4"x1/2"	902154	35,5	28
1"x1/2"	902155	38,5	35
1"x3/4"	902156	39,5	35
1" 1/4x3/4"	902157	42,5	44
1" 1/4x1"	902158	45	44
1" 1/2x1"	902159	45	50
1" 1/2x1" 1/4	902160	47,5	50
2"x1" 1/4	902161	52,5	62
2"x1" 1/2	902162	52,5	62

## MANICOTTO SOCKET



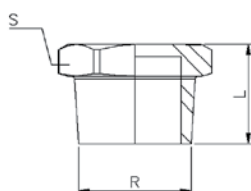
Misura R Size R	Codice articolo Code	Dimensioni in mm Dimensions in mm	
		E	L
1/4"	902401	16,5	24
3/8"	902403	20	25
1/2"	902405	24,5	32
3/4"	902407	30	35
1"	902409	37,5	41
1" 1/4	902411	46,5	45
1" 1/2	902413	53	45
2"	902415	65,5	54
2" 1/2	902416	82	63
3"	902417	95,5	69
4"	902418	125	85

## VITE DOPPIA HEXAGONAL NIPPLE



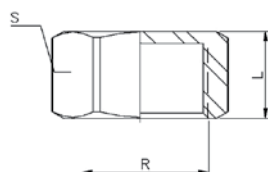
Misura R Size R	Codice articolo Code	Dimensioni in mm Dimensions in mm	
		L	S
1/8"	902499	25	13
1/4"	902500	25	15
3/8"	902501	27	18
1/2"	902502	34	23
3/4"	902503	36,5	28
1"	902504	42	35
1" 1/4	902505	47,5	44
1" 1/2	902506	47,5	50
2"	902507	57	62
2" 1/2	902508	61	77
3"	902509	67,5	90
4"	902510	80	117

## TAPPO MASCHIO HEXAGONAL PLUG



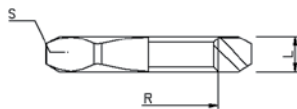
Misura R Size R	Codice articolo Code	Dimensioni in mm Dimensions in mm	
		L	S
1/4"	902600	14,5	15
3/8"	902601	16	18
1/2"	902602	19,5	23
3/4"	902603	21	28
1"	902604	24	35
1" 1/4	902605	27	44
1" 1/2	902606	27	50
2"	902607	32	62
2" 1/2	902608	34	77
3"	902609	37,5	90
4"	902610	44	117

## CALOTTA FEMMINA HEXAGON CAP



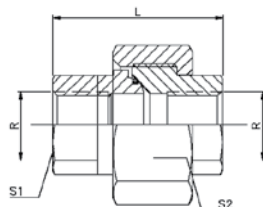
Misura R Size R	Codice articolo Code	Dimensioni in mm Dimensions in mm	
		L	S
1/4"	902700	16	18
3/8"	902701	16,5	20
1/2"	902702	21	25
3/4"	902703	22,5	30
1"	902704	26	38
1" 1/4	902705	29	47
1" 1/2	902706	29	53
2"	902707	33,5	66
2" 1/2	902708	38,5	82
3"	902709	42	96
4"	902710	48,5	122

## CONTRODADO HEXAGON NUT



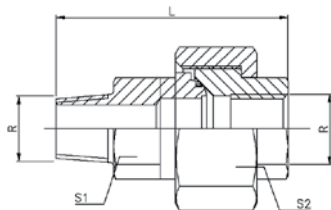
Misura R Size R	Codice articolo Code	Dimensioni in mm Dimensions in mm	
		L	S
1/4"	902800	7	18
3/8"	902801	7	24
1/2"	902802	8	30
3/4"	902803	9	34
1"	902804	9	43
1" 1/4	902805	11	52
1" 1/2	902806	12	58
2"	902807	13	72

## GIUNTO 3 PEZZI FF GUARNIZIONE IN PTFE FF UNION WITH PTFE FLAT SEAT



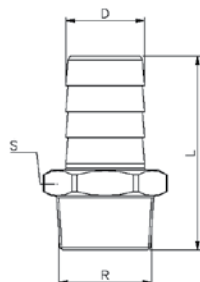
Misura Size	Codice articolo Code	Dimensioni in mm Dimensions in mm		
		L	S1	S2
1/4"	902200	33,5	17	29
3/8"	902201	36,5	20	34
1/2"	902202	39,5	25	39
3/4"	902203	42,5	30	47
1"	902204	50	38	58
1" 1/4	902205	54	47	67
1" 1/2	902206	58	53	76
2"	902207	65	66	90
2" 1/2	902208	75	82	109
3"	902209	83	96	123

## GIUNTO 3 PEZZI MF GUARNIZIONE IN PTFE FF UNION WITH PTFE FLAT SEAT



Misura R Size R	Codice articolo Code	Dimensioni in mm Dimensions in mm		
		L	S1	S2
1/4"	902180	44	17	29
3/8"	902181	47,5	20	34
1/2"	902182	54	25	39
3/4"	902183	58	30	47
1"	902184	68	38	58
1" 1/4	902185	74,5	47	67
1" 1/2	902186	78,5	53	76
2"	902187	90	66	90
2" 1/2	902188	102	82	109
3"	902189	113	96	123

## PORTAGOMMA MASCHIO HEXAGONAL HOSE NIPPLE



Misura R Size R	Codice articolo Code	Dimensioni in mm Dimensions in mm		
		L	D	S
1/4"	902060	42,5	9	15
3/8"	902061	49	11,5	18
1/2"	902062	57,5	15	22
3/4"	902063	66	20	28
1"	902064	76	27	35
1" 1/4	902065	79	33	44
1" 1/2	902066	83	39,5	50
2"	902067	92	52	62
2" 1/2	902068	99	67	78
3"	902069	107,5	80	91