

IDRJA-SMALL

FILTRI DI ASPIRAZIONE

SUCTION SCREENS



CARATTERISTICHE TECNICHE

- // **Rete:** acciaio inox Aisi 304 o Aisi 316
- // **Manicotto:** acciaio inox Aisi 304 o Aisi 316
- // **Connessione filettata:** maschio UNI ISO 228/1
- // **Grado di filtrazione:**
 - U.S. mesh: 18 (da 3/8" a 2")
 - U.S. mesh: 10 (da 2" 1/2 a 4")

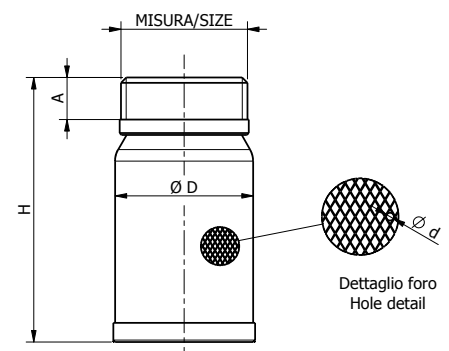
TECHNICAL FEATURES:

- // **Net-filter:** stainless steel Aisi 304 or Aisi 316
- // **Coupling:** stainless steel Aisi 304 or Aisi 316
- // **Threaded end:** gas male UNI ISO 228/1
- // **Filtration:**
 - U.S. mesh: 18 (from 3/8" to 2")
 - U.S. mesh: 10 (from 2" 1/2 to 4")



DIMENSIONI E PESI // DIMENSIONS AND WEIGHTS

Misura Size	DN	Dimensioni in mm Dimensions in mm				Peso in gr Weight in gr
		H	M	Ø D	Ø d	
3/8"	8	55	15	19	1	12
1/2"	15	55	15	22	1	15
3/4"	20	62	15	28	1	25
1"	25	71	15	36	1	34
1" 1/4	32	80	20	43	1	52
1" 1/2	40	90	20	49	1	62
2"	50	101	20	60	1	86
2" 1/2	65	111	25	79	1,8	135
3"	80	125	25	92	1,8	168
4"	100	144	25	115	1,8	253



FILTRI DI ASPIRAZIONE CON MANICOTTO IN PA SUCTION SCREENS WITH PA COUPLING



CARATTERISTICHE TECNICHE

- // **Rete:** acciaio inox Aisi 304
- // **Manicotto:** PA (nylon)
- // **Connessione filettata:** gas maschio
UNI ISO 228/1
- // **Grado di filtrazione:** U.S. mesh 18

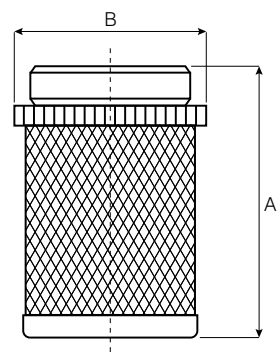
TECHNICAL FEATURES:

- // **Net-filter:** stainless steel Aisi 304
- // **Coupling:** PA (nylon)
- // **Threaded end:** gas male UNI ISO 228/1
- // **Filtration:** U.S. mesh 18



DIMENSIONI E PESI // DIMENSIONS AND WEIGHTS

Misura Size	DN	Dimensioni in mm Dimensions in mm		Foro Hole	Peso in gr Weight in gr
		A	B	Ø mm	
3/8"	8	49	23	1,0	6
1/2"	15	51	28	1,0	8
3/4"	20	57	34	1,0	12
1"	25	58	40	1,0	18
1" 1/4	32	68	48	1,0	25
1" 1/2	40	79	58	1,0	36
2"	50	95	68	1,0	55
2" 1/2	65	99	83	1,0	78
3"	80	114	100	1,0	126
4"	100	130	127	1,0	172



H2451

FILTRI DI ASPIRAZIONE IN ACCIAIO ZINCATO

GALVANIZED STEEL SUCTION SCREENS



CARATTERISTICHE TECNICHE

- // **Rete:** acciaio zincato
- // **Pressione nominale di esercizio:** 16 bar
- // **Temperatura di esercizio:** -10°C – + 100°C

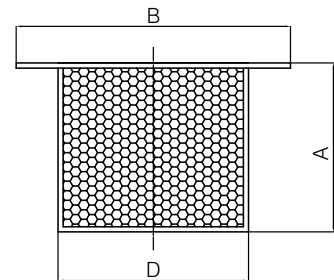
TECHNICAL FEATURES:

- // **Net-filter:** galvanized steel
- // **Nominal working pressure:** 16 bar
- // **Working temperature:** -10°C – + 100°C



DIMENSIONI E PESI // DIMENSIONS AND WEIGHTS

Misura Size	DN	Dimensioni in mm Dimensions in mm			Foro Hole ØD mm	Peso in kg Weight in kg
		A	B	D		
2"	50	80	155	110	6,0	0,50
2" 1/2	65	100	175	130	6,0	0,60
3"	80	125	200	145	6,0	1,00
4"	100	150	210	165	6,0	1,19
5"	125	180	240	195	6,0	1,62
6"	150	205	275	220	6,0	2,12
8"	200	255	330	275	6,0	3,10
10"	250	300	385	330	6,0	4,30



H1000

FILTRI A Y FILETTATI IN OTTONE

BRASS "Y" TYPE STRAINERS



CARATTERISTICHE TECNICHE

- // **Corpo e parti metalliche:** ottone
- // **Tenuta:** NBR
- // **Conessioni filettate:** gas femmina
UNI ISO 228/1
- // **Pressione nominale di esercizio:** 16 bar
- // **Temperatura di esercizio:** -20°C – +140°C
- // **Grado di filtrazione:** circa 400 μ

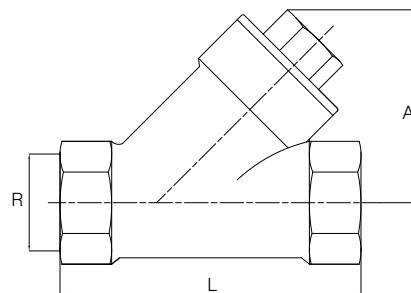
TECHNICAL FEATURES:

- // **Body valve and metallic parts:** brass
- // **Seal ring:** NBR
- // **Threaded ends:** UNI ISO 228/1 gas female
- // **Nominal working pressure:** 16 bar
- // **Working temperature:** -20°C – +140°C
- // **Filtration:** about 400 μ



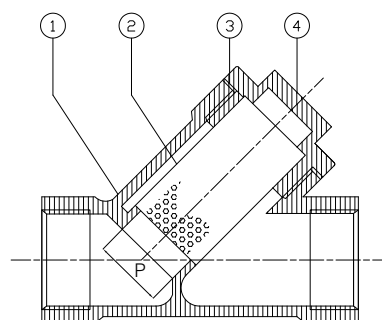
DIMENSIONI E PESI // DIMENSIONS AND WEIGHTS

Misura Size	DN	Dimensioni in mm Dimensions in mm		Peso in gr Weight in gr
		L	A	
1/2"	15	57	38,7	130
3/4"	20	68	43,0	195
1"	25	77	52,0	280
1" 1/4	32	90	67,0	530
1" 1/2	40	100	73,5	690
2"	50	115	84,0	1205



CARATTERISTICHE COSTRUTTIVE // CONSTRUCTION FEATURES

Componenti Components	Materiale Material
1 Corpo Body	Ottone Brass
2 Filtro Strainer	Acciaio Inox Aisi 304 Stainless Steel Aisi 304
3 Guarnizione Gasket	Fibra Fiber
4 Tappo Plug	Ottone Brass



90093

FILTRI A Y

"Y" TYPE STRAINERS



CARATTERISTICHE TECNICHE

- // **Corpo e parti metalliche:** acciaio inox Aisi 316
- // **Guarnizione:** PTFE
- // **Connessioni filettate:** gas femmina UNI ISO 228/1
- // **Pressione nominale di esercizio:** 40 bar
- // **Temperatura di esercizio:** -20°C – +200°C

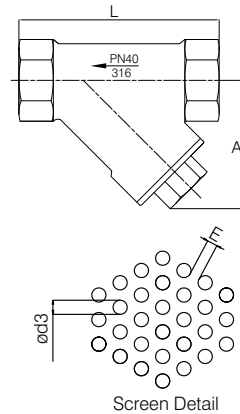
TECHNICAL FEATURES:

- // **Body valve and metallic parts:**
stainless steel Aisi 316
- // **Seal:** PTFE
- // **Threaded ends:** UNI ISO 228/1 gas female
- // **Nominal working pressure:** 40 bar
- // **Working temperature:** -20°C – +200°C



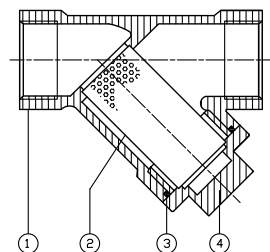
DIMENSIONI E PESI // DIMENSIONS AND WEIGHTS

Misura Size	DN	Dimensioni in mm // Dimensions in mm				Peso in kg Weight in kg
		A	L	Ød3	E	
1/4"	8	30	65	1,0	1,0	0,29
3/8"	10	30	65	1,0	1,0	0,21
1/2"	15	40	65	1,0	1,0	0,22
3/4"	20	45	80	1,0	1,0	0,35
1"	25	55	90	1,0	1,0	0,66
1" 1/4	32	65	105	1,0	1,0	0,77
1" 1/2	40	70	120	1,0	1,0	1,15
2"	50	85	140	1,0	1,0	1,76



CARATTERISTICHE COSTRUTTIVE // CONSTRUCTION FEATURES

Componenti Components	Materiale Material
1 Corpo Body	Acciaio Inox Aisi 316 Stainless Steel A.316
2 Filtro Strainer	Acciaio Inox Aisi 316 Stainless Steel A.316
3 Guarnizione Gasket	Teflon PTFE
4 Tappo Plug	Acciaio Inox Aisi 316 Stainless Steel A.316



VERSIONI FORNIBILI SU RICHIESTA // MODELS AVAILABLE ON REQUEST

Tipo di filettatura Type of thread	1/4"	3/8"	1/2"	3/4"	1"	1" 1/4	1" 1/2	2"
NPT	x	x	x	x	x	x	x	x

90094

FILTRI A Y FLANGIATI

FLANGED "Y" TYPE STRAINERS



CARATTERISTICHE TECNICHE

- // **Corpo e parti metalliche:** acciaio inox Aisi 316
- // **Guarnizione:** PTFE
- // **Connessioni flangiate:** UNI ISO 2278 PN 16
- // **Pressione nominale di esercizio:** 16 bar
- // **Temperatura di esercizio:** -30°C – +240°C

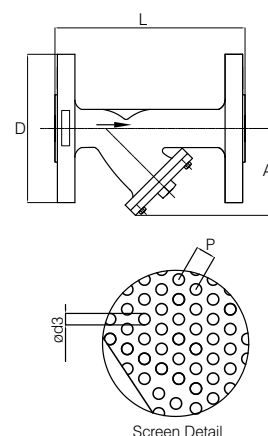
TECHNICAL FEATURES:

- // **Body valve and metallic parts:**
stainless steel Aisi 316
- // **Seal:** PTFE
- // **Flanged ends:** UNI ISO 2278 PN 16
- // **Nominal working pressure:** 16 bar
- // **Working temperature:** -30°C – +240°C



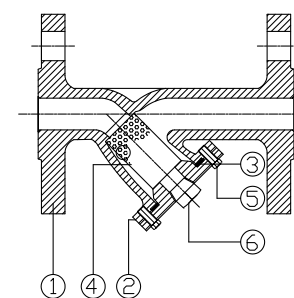
DIMENSIONI E PESI // DIMENSIONS AND WEIGHTS

Misura Size	DN	Dimensioni in mm Dimensions in mm					Ø d3	Peso in kg Weight in kg
		A	D	L	P			
1/2"	15	75	95	130	2	1,0	1,95	
3/4"	20	90	105	150	2	1,0	2,75	
1"	25	100	115	160	2	1,0	3,70	
1" 1/4	32	115	140	180	2	1,0	5,90	
1" 1/2	40	130	150	200	2	1,0	6,40	
2"	50	150	165	230	2	1,0	8,90	
2" 1/2	65	190	185	290	3,5	2,0	12,95	
3"	80	200	200	310	3,5	2,0	18,15	
4"	100	230	220	350	3,5	2,0	24,30	



CARATTERISTICHE COSTRUTTIVE // CONSTRUCTION FEATURES

	Componenti Components	Materiale Material
1	Corpo Body	Acciaio Inox Aisi 316 SS Aisi 316
2	Coperchio Cover	Acciaio Inox Aisi 316 SS Aisi 316
3	Guarnizione Gasket	Teflon PTFE
4	Filtro Strainer	Acciaio Inox Aisi 316 SS Aisi 316
5	Vite Bolt	Acciaio Inox Aisi 316 SS Aisi 316
6	Tappo Plug	Acciaio Inox Aisi 316 SS Aisi 316



VERSIONI FORNIBILI SU RICHIESTA // MODELS AVAILABLE ON REQUEST

Misura Size	5"	6"	8"
	x	x	x



CARATTERISTICHE TECNICHE

- // **Lavorazione:** acciaio inox stampato
- // **Corpo e parti metalliche:** acciaio inox Aisi 304
- // **Trattamento superficiale:**
sgrassaggio, decapaggio ed elettrolucidatura
- // **Tenuta:** FPM
- // **Connessioni filettate:** gas femmina UNI ISO 228/1
- // **Saldature:** a TIG senza apporto di materiale
- // **Test idraulico su saldature:**
aria compressa a 2 bar su ogni filtro
- // **Pressione nominale di esercizio:** 16 bar
- // **Temperatura di esercizio:**
-10°C – +150°C (con guarnizione FPM)
- // **Grado di filtrazione:**
500 μ (da 1/2" a 1")
800 μ (da 1" 1/4 a 2")

TECHNICAL FEATURES:

- // **Manufacturing process:** pressed stainless steel
- // **Body valve and metallic parts:**
in stainless steel Aisi 304
- // **Surface treatment:**
degreasing, pickling and electropolishing
- // **Seal ring:** FPM
- // **Threaded ends:** UNI ISO 228/1 gas female
- // **Welded joints:** made with TIG method without any additional material
- // **Hydraulic test on welded joints:**
compressed air at 2 bar on each filter
- // **Nominal working pressure:** 16 bar
- // **Working temperature:**
-10°C – +150°C (with FPM seal)
- // **Filtration:**
500 μ (from 1/2" to 1")
800 μ (from 1" 1/4 to 2")



Massimo rendimento: Perdite di carico altamente inferiori ai tradizionali filtri a Y
Maximum efficiency: much lower friction losses than traditional "Y" type strainers